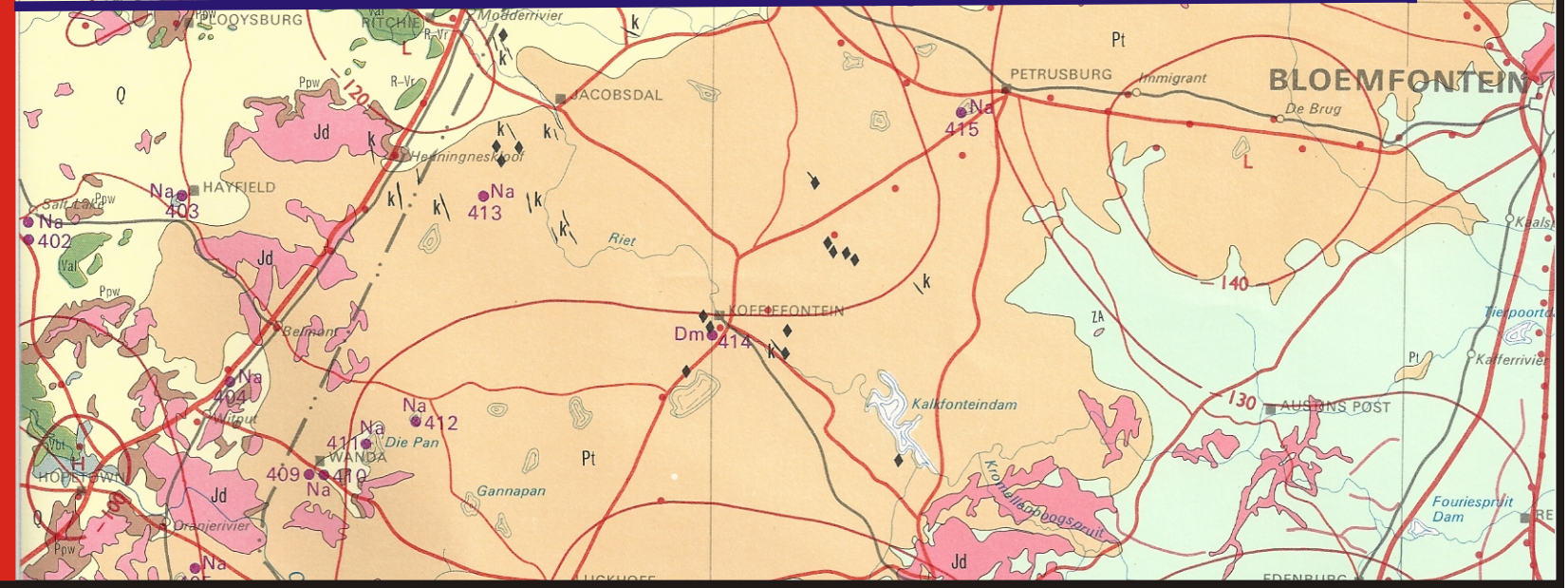
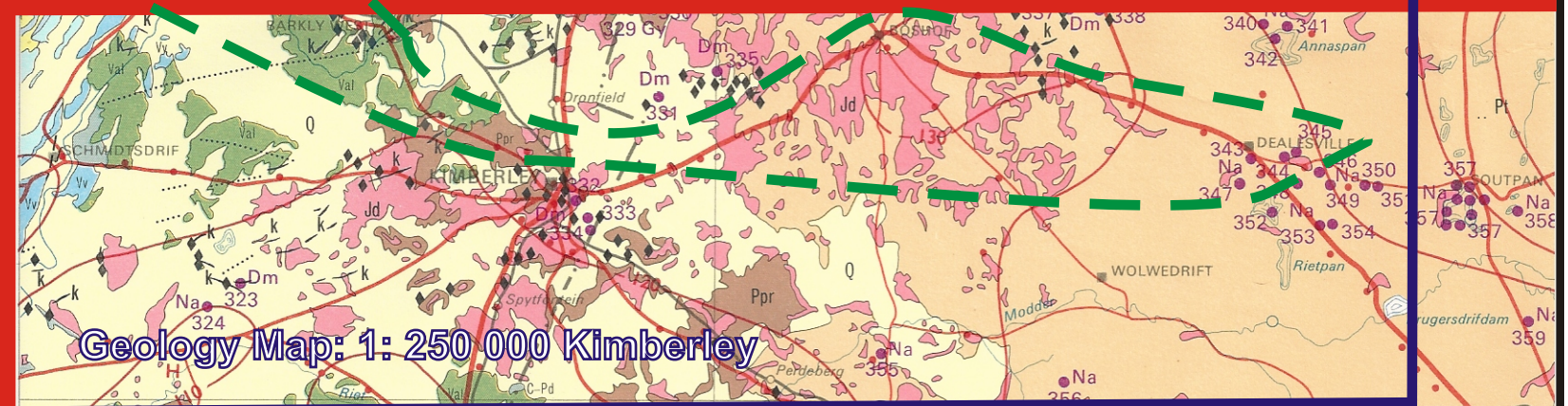
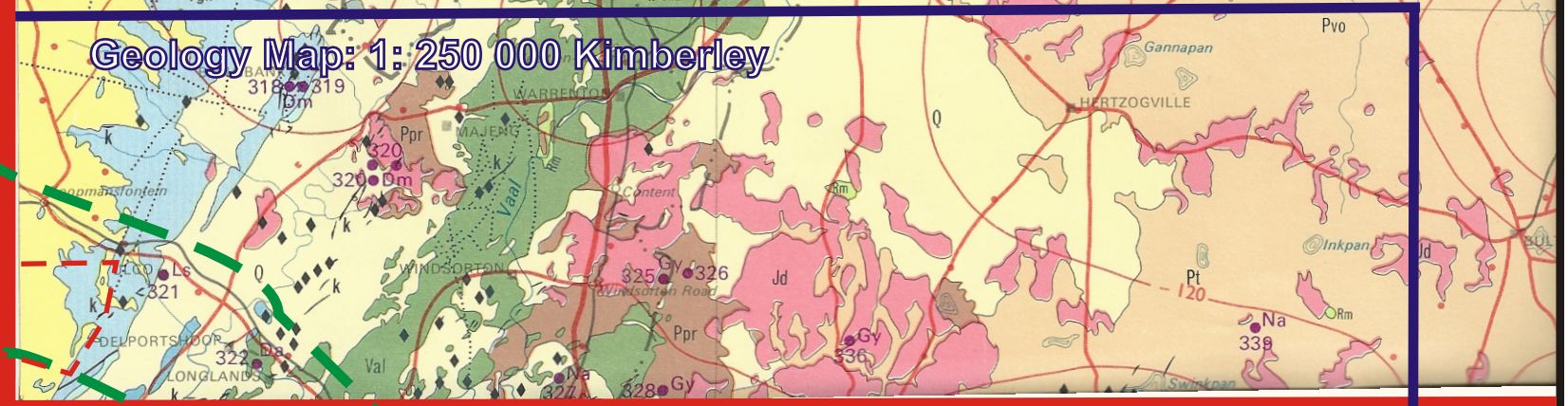
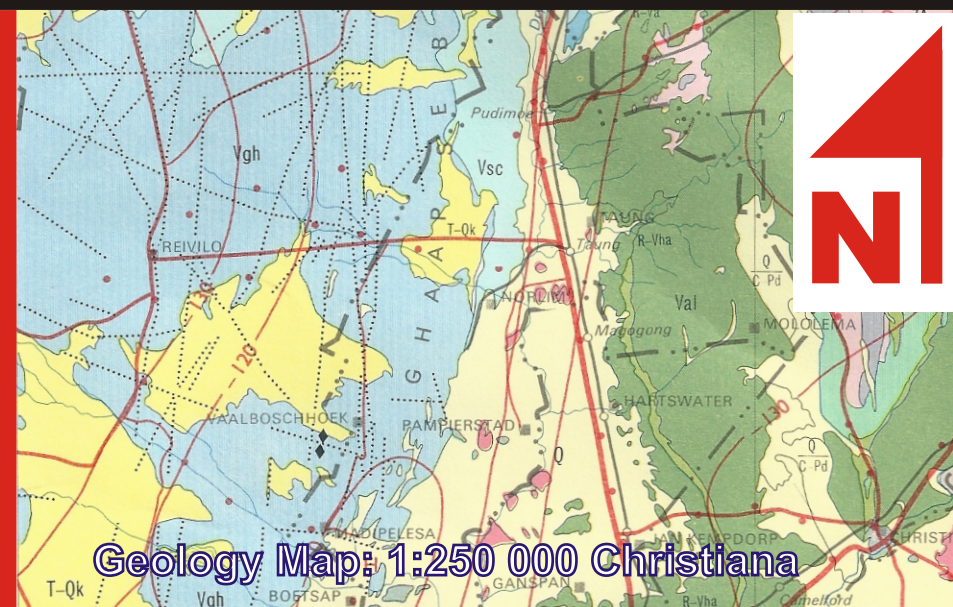
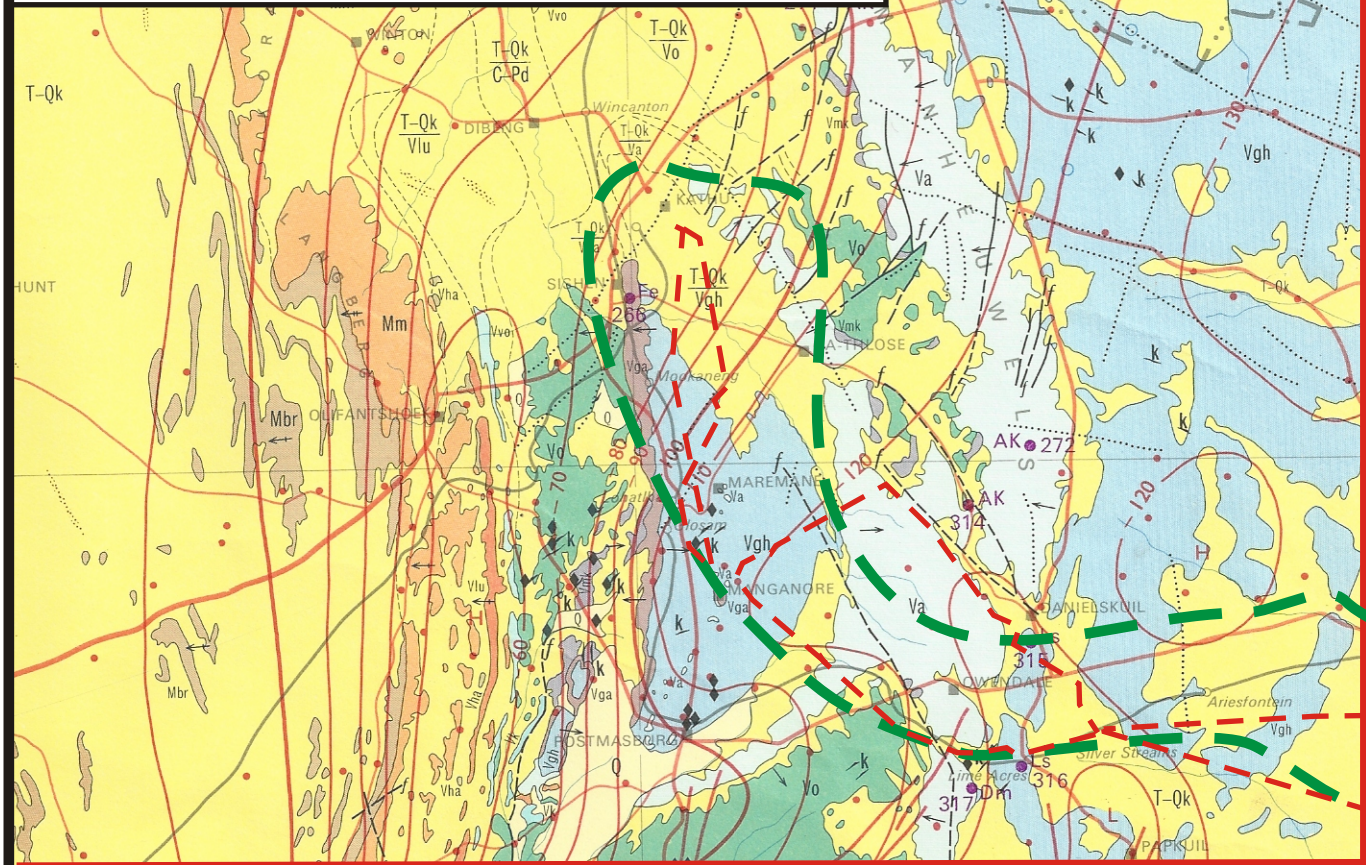


Figure 3: ESKOM: Dealesville - Kimberley - Kathu  
Manganore to Ferrum Substation  
Geology Map: Scanned 1:1 000 000



Report by:

**GEOSET cc**  
CK 99/65610/23  
RAADGEWENDE INGENIEURS- EN OMGEWINGSGEOLOE  
CONSULTING ENGINEERING AND ENVIRONMENTAL GEOLOGISTS

POSBUS/PO BOX 60995  
KARENPAK 0118  
WEBFAX: 086 658 3190

TEL/FAX: (+2712)(0)12 525 1004  
CELL: (+2782)(0)82 925 4075  
e-mail: davidsvdm@webmail.co.za

Ingenieursgeoloog  
Engineering Geologist

**David S. van der Merwe**  
Bsc.(Hons.)(Eng. Geol.), Pr.Sci.Nat.; MSAIEG; MEESG.

Legend:

- Border of study area
- Inferred Corridorzone boundary

Geology Map: 1: 1 000 000

Legend

- Qc/Qk Calcrete calcified pandune & surface limestone: Quaternary
- Jd Dolerite
- Pt Shale siltstone sandstone: Tierberg Formation, Ecca Group, Karoo Supergroup
- Ppr Shale: Prince Albert Formation, Ecca Group, Karoo Supergroup
- V Dolomite, chert & limestone: Campbell Group, Griqualand West Sequence
- Rg/Val Andesitic lava: Platberg Group, Ventersdorp Supergroup

ENGINEERING GEOLOGICAL SURVEY:

As shown on plan and described in report

Engineering Geological Investigation to determine the potential for the upgrading of Power lines from Dealesville to Kuruman.

REPORT NUMBER: GS201403KMF DATED: May 2014